

AUTOPIA

A Gala Auction Event to Benefit
Lutheran High School



March 6, 2010

**California Automobile Museum
2200 Front Street, Sacramento**

Welcome to "AUTOPIA"!



Sharon Kaminskis
LHS Executive Director

Tonight's theme is Autopia. The word is a portmanteau of the words automobile and utopia coined by Disneyland when they open the park in 1955. It brings up pictures of Tomorrowland and exciting adventures on the roads of the future. The Autopia represented the future of what would become America's multi-lane, limited-access highways which were still being developed.

It struck me that while the theme for the evening was chosen because of its venue, and not the theme park, that there is an analogy here. Just as the Autopia takes guests on a drive along new roadways and gives them a glimpse of the future, Lutheran High provides new roadways for our students as we prepare them for the future. Just as the Autopia cars are guided by rails to reduce the problem of colli-

sions on the Autopia, Lutheran High students are guided to stay on track by our school standards, a loving and committed faculty, and a learning environment that fine tunes them to become the high-performance Christians that God intended them to be. Lutheran High School is a road full of adventure, new sights, and new skills where we minimize teen life collisions and help them learn to navigate their personal roads to the future.

You are our partners: the mechanics, engineers and filling station managers that help ensure the drive. Without your financial support, prayers, and endless hours of volunteer work, we would not have our Autopia. Thank you for your continued support! Please enjoy your evening.

Sharon





AUTOPIA Events

5:00 p.m.—AUTOPIA Begins

Appetizers & Beverages

Luxury License Plates

Chance to win one of three great prizes!

Purchase Raffle Tickets for Class Baskets!

Place your tickets in front of the basket(s) you want to win!

Silent Auction Begins

See Table Closing times on Page 10

6:40 p.m.—Welcome & Prayer

Entertainment

Dinner Served

Luxury License Plates Drawing

Class Basket Drawing

Live Auction Begins



AUTOPIA Dinner Menu

Prepared by Kara & Mauricio Perez



Caesar Salad

Chicken Picatta over Pasta with Vegetables

Rolls & Butter

Cabernet Sauvignon and Chardonnay Wine

Vic's Ice Cream

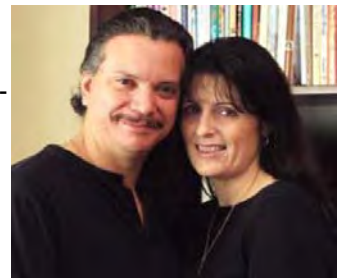
Coffee



Route 66 Dessert Silent Auction Table

Interested in some additional sweet treats? Well come get your kicks at the Route 66 Dessert Silent Auction. These wonderful desserts were made especially for tonight's event...enjoy them here or use one of the 'to go' boxes and take them home to enjoy. Either way, you support Lutheran High School! Thank you!

This evening's meal is prepared by caterers Mauricio & Kara Perez of Town & Country Lutheran Church, Sacramento. Previously in the food service industry, Mauricio now uses his extensive background as a ministry—serving as Fellowship Leader at Town & Country Church. Both Mauricio and Kara prepare meals for church and school functions, from auction dinners to luncheons and receptions. Between them, they have four children, one of which is a freshman at Lutheran High. Thank you, Perez family, for your gracious support of Lutheran High School!



Route 66 Dessert Table

Closes at 7:35 p.m.

Back by popular demand...

You won't want to miss bidding on any one (or more) of these 'turbo-charged' sweet treats. You can enjoy them here at your table with friends and family or take one of the "TO GO" boxes and enjoy them at home later. Not only do you get a decadent dessert but also the beautiful dish on which it is served.

Thank you to the following donors of these delectable treats:



Wendell Alff

Milton Balian

Jane Balian

Blattlers by Hoffman

Courtney Berretta

Lisa Dubé

Freeport Bakery

Kathleen Hecox

Miss Mellow

Madge Mulkey

Kara Perez

Irene Powers

Keeta Scholl

...who generously contributed to this table.



Sponsors

Major Corporate Sponsors

Thrivent Financial for Lutherans
North Sacramento Chapter
South Sacramento Chapter
El Dorado County Chapter
Bob-Leon Plastics and Countertops
Delta Restaurant Supply

*"For it is by grace you have
been saved through faith,
and this is not from your-
selves, it is the gift of God."*

Ephesians 2:8

Rolls Royce Sponsors

Ronald & Judith Clark
Johas & Associates
Will & Jane Nelson
University Automotive

Jaguar Sponsors

Richard & Helen Rogers
Rev. Walter & Ione Tietjen

Cadillac Sponsors

Tony & Helen Enriquez
Brian & Janice Wiese



Luxury License Plates

Time to 'rev up your engine' and purchase one (or more!) of 100 "License Plates" at \$25 each for a chance to win one of three awesome prizes! Numbers will be drawn for 1st, 2nd & 3rd prizes.



Just look what you could win:



Choose from any *LIVE AUCTION* item! Yes, you get to pick ANY live auction item with your winning plate: trips, fun, art, luxury items & more!



Choose from any *SILENT AUCTION* item! You win the silent auction item of your choice from any open table: many dinners, events & items to choose from!



Choose from any *DESSERT AUCTION* item! Victory is sweet! Trump any bidder for a delightful dessert that serves up to 8!





Pullman Lawn Service

Since 1966

1100 Arrowhead Avenue
Rio Linda, CA 95673-4308
(916) 991-1327
Cell: (916) 715-2048 Fax: (916) 991-1327
Email: PullLawSer@aol.com



We do:

Commercial Buildings
Model Homes
HOA's—
Home Owner Associations



Class Baskets

Support LHS by purchasing raffle tickets for this year's class baskets.

Students will be coming to your tables with raffle tickets, or you can purchase them at the table near the bar.

Make purchasing easy tonight...simply give raffle sellers your bid number, and you can pay the cashier at the end of the evening.

Raffle Ticket Prices:

\$ 1.00 = 1 Ticket

\$ 5.00 = 8 Tickets

\$10.00 = 1 Arm's Length

\$20.00 = 2 Arm's Length

Autopia

Presented by the Senior Class
Parent Coordinator: Michelle Dragics



Staycation

Presented by the Junior Class
Parent Coordinator: Patricia Stevens



Wine & Cheese

Presented by the Sophomore Class
Parent Coordinator: Kimberli Brewer



It's Showtime!

Presented by the Freshmen Class
Parent Coordinator: Terri Lowe



Auction Protocol

Rules of the Silent Auction

These tables include an array of items that may be bid upon until the table is officially closed (see below). Just look for the tables with the matching colored balloons as you enter the museum showroom.

Green Edsel Table

Closes at 6:30 p.m.

Pink T-bird Table

Closes at 7:00 p.m.

Blue T-bird Table

Closes at 7:20 p.m.

Yellow Mustang Table

Closes at 7:30 p.m.

Route 66 Dessert Table

Closes at 7:35 p.m.

Each item on the silent auction tables has a bid sheet with a minimum dollar amount for the opening bid. Each new bid is entered on the space directly below the previous bid in an amount equal to or higher than the increment listed on the form. The highest bidder highlighted by the LHS auction official at closing time constitutes the winning bid.

Rules of the Live Auction

A live auctioneer will begin each item for a bid at a specific amount. Each person will bid openly against one another raising his/her bidder number (on the back of this program) for the auctioneer to see. The auction ends for each item when no participant is willing to bid further.





The LHS auction official is the final authority and shall determine the winning bidder. All sales are final and there will be no exchanges or refunds except where specified. All property is sold “as is” and LHS neither warrants nor represents, and shall not be responsible for the correctness of description, genuineness, authorship, origin or condition of property. Unless otherwise specified, all auction items and services must be used within one year after March 6, 2011.

Failure, for whatever cause, to arrange for the trip, meal, party, etc., within the time limit and according to the specified conditions and/or limitations, imposes no obligation on the donor or the LHS Auction for a refund.

Fund-A-Student

During the “Fund-A-Student” portion at the end of the Live Auction, you will be asked to raise your bid number to donate additional funds towards supporting the scholarship fund for LHS students.

Should you choose to contribute, the amount you bid will be added to your final auction invoice. You may also give to this fund at the cashier table when you are checking out if you missed the opportunity at the end of the Live Auction.

Check-Out Procedures

To assure accuracy in computing your total purchases, we ask that you pay for your items after you have completed ALL of your evening bidding. Proceed to the cashier with your bidder number to pay for purchases. Auction payments may be made to the cashier anytime after 8:00 p.m. For your convenience, we accept cash, checks, MasterCard and Visa.

When making charitable contributions, please note that the amount paid over the value of an item is tax deductible. For example, if you have a winning bid of \$100 for an auction item valued at \$65, the deduction is \$35.

Please be sure to take your items home as all items must be removed the night of the auction. Assistance is available as needed.



**You want to keep
Lutheran High great.
So do we.**

The brightest futures are built together. That's why Thrivent Financial for Lutherans is working with Lutheran High to support strong, vibrant youth!

We are pleased to be part of the Lutheran High School 2010 Auction. And like you, we're proud of our commitment to this youth of this community.

More Information 916-231-1000



Thrivent Financial for Lutherans®
Let's thrive!

Live Auction

LA-01 4th Street Grille, Jazz and More!

Check your calendars and get your bid numbers ready! Saturday, April 17, is sure to be a special evening. Enjoy dinner at the 4th Street Grille (\$100 Value) and an evening of Jazz featuring Dave Siebels on the Hammond B3 Organ at Peace Lutheran Ministries, where his son-in-law and daughter serve as Pastor and wife. Dave has played & conducted for Pat Boone for 20+ years and recorded for many artists in his Los Angeles stomping grounds, including BB King and Ray Charles. Includes event tickets, beverages and desserts for four - and two signed CD's!

Donated by: Peace Lutheran Youth Group, 4th Street Grille

LA-02 Perfectly Clear Window or Carpet Cleaning

Dean Jones, owner of Perfectly Clear Window and Carpet Cleaning (and dedicated LHS Athletic Director), offers the winning bidder two hours of service for your carpets or windows. Spring is in the air...bid on this one and set a date to get your spring cleaning underway!

Donated by: Perfectly Clear Inc.

LA-03 Hot Air Balloon Rides

Balloon rides for one, two or four people. Float for an hour above the treetops and below the clouds. When you land, celebrate with a fruit juice or Champagne toast! Choose from 150 locations nationwide...take your ride near home or while on vacation! Fully transferable - makes a fantastic gift! Valid until 3/6/2011

Donated by: Soaring Adventures

LA-04 Dinner for Four

Dearly loved (and happily retired) Pastor Bill and his wife Joy will welcome four guests into their lovely north Pocket area home to enjoy a gourmet dinner. It's as easy as setting the date and showing up to enjoy a wonderful evening of great food and excellent company.

Donated by: Reverend Bill and Joy Plath



**Bob-Leon
Plastics and
Countertops**

5151 Franklin Blvd.
Sacramento, CA 95820
(916) 452-4063
www.bob-leon.com

**Your #1 choice for
laminite and solid
surface countertops**

Success is Surfacing



Wilsonart

Official Associated Distributor

Formica Laminart

Nevamar Abet Laminati

Pionite

Corian Staron Wilsonart

HI-MACS Topstone

Formica Solid Surfaces

Avonite Gibraltar

Members in good standing with the Woodwork Institute and the Better Business Bureau.

Live Auction

Continued — 1

LA-05 Day of Fun on the Water for Four!

Enjoy a fun day on the water on a 20' Reinell powerboat at your choice of waterways within a 50-mile radius of Sacramento. Good for up to four people, and water skis, kneeboard, wakeboard and a tube are available. The Sheipline's will be your hosts on this all-day voyage. We recommend you try Scott's Seafood at Le Rivage, so we've added a \$75.00 gift certificate for your dining pleasure. You can dine in or have them serve you in your boat at their dock...either choice is a winner!

Donated by: Rob & Ingrid Sheipline and Bob Roehrs

LA-06 Springtime Quilt

From the hands and hearts of the women at Town & Country Lutheran's Quilting guild, this Cal-King sized quilt will add a 'breath of spring' to your home! Bid on this one and enjoy it for many years to come!

Donated by: Town & Country LWML Quilters

LA-07 Week in Kauai

This one-bedroom unit that sleeps four is located on the north shore of the Garden Island of Kauai at the Cliffs Resort - 22 acres of lush tropical garden land that overlooks the north Pacific. This is a great place to relax or use as a base to explore the entire island. Available for one week between January-March 2011 arranged through the LHS office.

Donated by: LHS

LA-08 "Fish Cat"

This successful Sacramento sculptor (and Trinity Lutheran member) has been featured at the Sacramento Airport and is currently showing at the Solomon Dubnick Gallery. He specializes in colorful whiskered creations - and this one is special! This is truly a 'one-of-a-kind' that you can claim as yours tonight!

Donated by: Gary Dinnen



Jazz Cafe

@ Peace Lutheran

924 San Juan Rd, Sacramento, CA



April 17, 2010

Doors open at 6:30, concert at 7:00

Pre-sold tickets are \$12 (or 2 for \$20)

Tickets at the door are \$15 (or 2 for \$25)

Come join us for a world-class jazz concert! This jazz trio will feature Dave Siebels on the Hammond B3 Organ. Enjoy café drinks and desserts along with the great music.

Proceeds benefit the Peace Lutheran youth who will be attending the National Youth Gathering in New Orleans this summer.



Bio: Dave Siebels is a composer, arranger, keyboardist and record producer. He has played keyboard and conducted for Pat Boone for over 20 years. He has also played, conducted and recorded for such artists as Rita Coolidge, Ray Charles, BB King, Rick Springfield, Taylor Dane and many others. His most recent project and life-long dream was an original Hammond B3 album with Gordon Goodwin's Big Phat Band. To read more or hear samples go to www.bigphatb3.com.



916-780-7171

530-432-3131

A Special Thank You to Ballooney who not only provides quality balloon arrangements and full service event décor as you see here tonight, but you are also meeting the friendliest people in the business. They're no doubt the region's most sought after event décor company.

Visit their website at www.ballooney.net to view their award winning, cutting edge designs. Their work speaks for itself!



© BALLOONACY 2007

Live Auction

Continued — 2

LA-09 It's Heavenly at Tahoe

Tahoe Seasons Resort sits at the base of Heavenly ski resort and near many attractions. Get away for President's Day Week (preferential usage) or other available week for this wonderful 1,000 sq foot condo with two one-bedroom suites, each with a fireplace. Sleeps 8. Don't miss out!

Donated by: LHS

LA-10 Zanone House Bed and Breakfast Weekend

Enjoy a delightful weekend in Eureka at the Zanone House, a National Register home. Accommodations for one or two couples for a two or three-night stay. Also includes Friday dinner at the Carson Mansion and a choice of area tours - Patrick's Point State Park (beach and Indian village), town of Ferndale (museum, shops, cemetery). Kayaks available for a scenic look at the bay. Check out this spectacular piece of Queen Anne architecture at www.kuhnel.org. Fantastic hosts!!

Donated by: Ron & Melanie Kuhnel

LA-11 Tahoe Paradise

Stay a week at Lake Tahoe Paradise Cabin, located on a quiet cul-de-sac in Meyers. A mere five miles from Lake Tahoe's beautiful south shore and seven miles from Stateline, this cabin has four bedrooms, two and a half baths, wrap-around deck, and a two-car garage. Understood that a week is seven days and must be taken before end of 2010. No pets and no smoking please. Located in the same cul-de-sac as the Weber cabin (see LA-16).

Donated by: Reverend Walter & Ione Tietjen

LA-12 Cabo San Lucas!

Book your flight for a November 6-13 vacation at Villa Del Palmar in Cabo San Lucas! This five-star resort is located on a pristine beach just a five-minute walk to downtown Cabo. The one-bedroom, two-bath unit accommodates four. Beach, shopping, swimming pools, waterfalls and more. If you've been to Cabo it is time to go back for some much needed R&R...if you've never been there, it's time to make it a first!

Donated by: Jim and Ann Cunningham



Kobasic's Candies

Simply the Finest...

*3rd & 4th Generation Makers of Fine
Chocolates & Candies*

5324 Riverside Blvd.
Sacramento, Ca 95822

(916) 448-3555 447-2818 Fax
KobasicsCandies.com

| | | |
|--|---|--|
| | T | |
| | O | |
| | W | |
| L U T H E R A N S C H O O L | | |
| K-8th Grades | & | |
| Academic Excellence | C | |
| Core Knowledge Curriculum | O | |
| WASC Accreditation | U | |
| Interscholastic Athletics | N | |
| Educational Travel | T | |
| Before & After School Care | R | |
| Now Accepting Applications | Y | |
| 4019 Marconi Ave. Sacramento • www.buildinguplives.com • (916) 481-2542 | | |

Live Auction

Continued — 3

LA-13 Getaway to Mendocino Coast

Wonderful resort nestled in the Mendocino Coastal Dunes six miles north of Ft. Bragg on the west side of Highway 1. A private lane ends at a path to MacKerricher State Park and Beach encompassing the Ingle-noon Fen-Ten Mile Dune Preserve. The Sand Dollar, one of four homes on two acres, will be your home away from home for four days, three nights. This one bedroom/one bath has a sunroom that may be used as an additional sleeping area, a hot tub, gas fireplace, 42" TV, state of the art kitchen and more! Don't miss out on this one!

Donated by: Harvey and Marsha Cain

LA-14 Serenity & Solitude on the Big Island, Hawaii

Cozy and comfortable, this home is located on the Big Island of Hawaii near Hilo and a 15-mile drive to Volcanoes National Park. If you'd like to experience the peace and beauty of the island, this is the one! This studio home sleeps four. There is no housekeeping service, so leave it as you find it, but you've got the place to yourself for an entire week to explore and relax.

Donated by: Judy Lloyd and Loretta & Bill Read

LA-15 Tahoe Cabin

Enjoy Sunday-Friday afternoon stay at this wonderful three-bedroom, two-bath Lake Tahoe (Meyers) cabin. Located on a quiet cul-de-sac, seven miles from Stateline. Lots of trees, fresh air, quiet atmosphere, with large outdoor deck. Located in the same cul-de-sac as the Tietjen cabin (see LA-13).

Donated by: Chuck & Linda Weber

LA-16 Trek-Model "Lime"

What is a Lime, you ask? Lime is Trek Bicycle's coasting model, the best bike available for the casual rider. The three-speed, auto shifting and a brake system, like we had when we were kids (push pedals back and you slow down and/or stop), is virtually maintenance-free and makes this a great bike for any rider! Note: City Bicycles will exchange for smaller or larger size as needed to best fit the rider. Start bidding!

Donated by: City Bicycle Works and Bob Roehrs

Live Auction

Continued — 4

LA-17 **Crismons Tree**

Christmas is a time to honor the Christ child. We want our Christmas trees to be beautiful. Here is a wonderful way to do both. The designs of these ornaments are symbols of our Christian faith; they symbolically tell the Christmas story and about our Christian faith. Each Crismon is hand crafted from Gold beads and pearls. There are three sets of 13 different symbols and gold ball ornaments to grace your tree. Tiny white lights reflect the purity of our Savior. These ornaments will be family heirlooms which will grace trees for many years to come.

Donated by: Light of the Valley Women's Group and Sharon Kaminskas

LA-18 **It's a Five Forker!**

A five-course meal for up to eight guests prepared and served by Pastor Jay Reed and his family. Start with Brennan's super special appetizer (something like pizza rolls), and then enjoy Shannon's scrumptious Greek salad. The main course includes Pastor Jay's incredible kabobs on a bed of rice pilaf. The after dinner wind down is an offering of fresh fruit and cheeses with really hard to pronounce names arranged by Megan, topped off with Cassidy's outrageous brownies and ice cream.

Donated by: Pastor Jay Reed

LA-19 **Night on the Town!**

Check the reviews and make your reservation for two at any California Musical Theatre production at The Cosmopolitan Cabaret which can be preceded or followed by a visit to the Melting Pot for a savory or sweet fondue!

Donated by: The Cosmopolitan Cabaret and The Melting Pot

Live Auction

Continued — 5

LA-20 **CHP Ride Along**

You'll experience first hand the highways of Sacramento and the behind-the-scenes life of a CHP officer with this ride along offered by the California Highway patrol's South Sacramento Area office. After your ride along, you will be treated to a meal at Denny's, where you will find good food and maybe a CHP officer or two. Please note: CHP Ride Along participant must be 18 years old, pass a background check and be required to complete and sign a release of liability form. Valid for 90 days.

Donated by: California Highway Patrol

LA-21 **Spring Cleaning Done for You!**

Enjoy the result without the effort! This gentleman from Light of the Valley Church LOVES to clean, AND he supplies the equipment and the cleaning materials! He will provide you four hours of focused cleaning services at an agreed upon time.

Donated by: Wendell Alff

LA-22 **Fund-A-Student**

The only way many students are able to attend Lutheran High School is by receiving tuition assistance. Lutheran High is able to award scholarships to deserving students through the generosity of people like you. We have an adopt-a-student fund that organizations and individuals contribute to throughout the year. Tonight please consider what a donation could do for God's kingdom. Our fund is seriously in need of donations of any amount. You will have an opportunity this evening to provide our Scholarship Fund with much needed resources. Thank you!

Donated by: Fund-A-Student

Silent Auction—Green Edsel Table

Closes at 6:30 p.m.

| | | |
|--------|---|-------|
| SA-001 | Unique! War & Peace Photo Holder Donated by: Austin & Cindy Eaton | 25.00 |
| SA-002 | Wonderful Easter Celebration Basket Donated by: Redeemer Lutheran, Lodi | 35.00 |
| SA-003 | Movie and a Show! \$40 in Dining to El Faro and Jane Austen Movie Basket Donated by: El Faro Restaurant & Gary/Judy Spolarich | 55.00 |
| SA-004 | Beautiful Handmade White and Soft Blue Crocheted Blanket Donated by: Lois Berndt | 30.00 |
| SA-005 | Starbucks Gift Bag w/2# Coffee and New Instant Packs! Donated by: Starbucks, 16th & T Strrets | 31.00 |
| SA-006 | Beginning Fly Fishing Class Donated by: American Fly Fishing | 40.00 |
| SA-007 | Introduction to Fly Fishing Class Donated by: American Fly Fishing | 50.00 |
| SA-008 | Lovely Luffa Spa Basket Donated by: Debbie Burow | 40.00 |
| SA-009 | Lunch for Two at La Bou! Donated by: World of Good Taste | 25.00 |
| SA-010 | Wicker Picnic Basket Filled with Goodies! Donated by: Dagmar & John Wicks | 35.00 |
| SA-011 | Two Bonded Leather Photo Albums Donated by: Austin & Cindy Eaton | 20.00 |
| SA-012 | For the Cook - Olive Crock Utensils Holder and \$25 Safeway Gift Card Donated by: Austin & Cindy Eaton and Safeway | 40.00 |

Silent Auction—Green Edsel Table

Closes at 6:30 p.m.

| | | |
|--------|--|-------|
| SA-013 | Handmade Quilted Table Runner w/Matching Napkins and Plate Donated by: Peggy Fishburn | 35.00 |
| SA-014 | \$25 Gift Card Donated by: Evangeline's | 25.00 |
| SA-015 | Two Unique Phantom of the Opera Musical Snow Globes Donated by: Tom Bost | 40.00 |
| SA-016 | Pet Lover's Bag of Goodies! Donated by: Pets to Go, Elk Grove | 46.00 |
| SA-017 | Harvest Colored Quilt Donated by: Light of the Valley Quilters | 30.00 |
| SA-018 | "Courage" Meditation Chair Donated by: Tom Bost | 20.00 |
| SA-019 | BJ's Restaurant \$25 Gift Card Donated by: Randy & Shelly Worden | 25.00 |
| SA-020 | Mirrored Centerpiece with Green Sconces and Candles Donated by: Gary and Judy Spolarich | 35.00 |
| SA-021 | Easter Basket - Great Gift for the Grandkids! Donated by: John & Dagmar Wicks | 60.00 |
| SA-022 | \$25 Gift Card Donated by: Be Swank Clothing, Elk Grove | 25.00 |
| SA-023 | Stylish Ensemble: Hat, Scarf, Earrings (Mannequin not included) Donated by: Be Swank Clothing, Elk Grove | 50.00 |
| SA-024 | Great Buy! 4 Pair of Unique Earrings Donated by: Mary Arakelian | 40.00 |

Silent Auction—Green Edsel Table

Closes at 6:30 p.m.

| | | |
|--------|---|-------|
| SA-025 | 3-Piece Decorated Glass Ovenware Donated by: John & Dagmar Wicks | 65.00 |
| SA-026 | Fancy Knife with Stand Donated by: Andy Johas | 40.00 |
| SA-027 | Bracelet Style Watch Donated by: American Legacy, Old Sacramento | 30.00 |
| SA-028 | 9-Hole Round of Golf for Four Donated by: Campus Commons Golf Course | 40.00 |
| SA-029 | \$50 Gift Card (Parents, think Proms & Weddings!) Donated by: Men's Wearhouse | 50.00 |
| SA-030 | Tiered Buffet Server Donated by: John & Dagmar Wicks | 30.00 |
| SA-031 | Time to Garden Again! \$25 Gift Certificate Donated by: Capital Nursery | 25.00 |
| SA-032 | \$20 Gift Card Donated by: Nopalitos Southwestern Café | 20.00 |
| SA-033 | \$25 Gift Card Donated by: Nopalitos Southwestern Café | 25.00 |
| SA-034 | \$25 Gift Certificate Donated by: Espanol Restaurant | 25.00 |
| SA-035 | Dinner for Two Donated by: El Jardin Restaurant | 25.00 |
| SA-036 | Ice Cream Sundaes for Six! Donated by: Leatherby's Ice Creamery | 36.00 |

Silent Auction—Green Edsel Table

Closes at 6:30 p.m.

| | | |
|--------|---|-------|
| SA-037 | Ice Cream Sundaes for Six! Donated by: Leatherby's Ice Creamery | 36.00 |
| SA-038 | Two Ice Cream Pie Certificates Donated by: Vic's Ice Cream | 40.00 |
| SA-039 | Wonderful Spring Wreath for your Home Donated by: Mary Arakelian | 35.00 |
| SA-040 | Somewhere Over the Rainbow Musical Wizard of Oz Figurine Donated by: Tom Bost | 20.00 |
| SA-041 | Handmade Crystal Necklace Donated by: Lois Berndt | 20.00 |
| SA-042 | Handmade Crystal Necklace Donated by: Lois Berndt | 20.00 |
| SA-043 | Handmade Crystal Necklace Donated by: Lois Berndt | 20.00 |
| SA-044 | Handmade Crystal Necklace Donated by: Lois Berndt | 20.00 |
| SA-045 | Handmade Crystal Necklace Donated by: Lois Berndt | 20.00 |
| SA-046 | Handmade Crystal Necklace Donated by: Lois Berndt | 20.00 |



Silent Auction—Pink T-bird Table

Closes at 7:00 p.m.

| | | |
|---------------|--|-------|
| SA-101 | Great for any Home! Metal Wine Rack filled with 3 Bottles of Wine Donated by: Austin & Cindy Eaton | 75.00 |
| SA-102 | Landy VS Cognac Donated by: Kellie Smith | 30.00 |
| SA-103 | Red Truck Mini 3 Liter Barrel of California Red Wine with spout Donated by: Kellie Smith | 30.00 |
| SA-104 | Soft Cruzen Cooler Filled with Variety of Beer - Ready for a Party! Donated by: Kellie Smith | 35.00 |
| SA-105 | \$40 in Gift Cards to Perry Creek Winery Donated by: Kellie Smith | 40.00 |
| SA-106 | Handmade Delta Wine Cork Trivet Donated by: Myrna & John Corzine | 40.00 |
| SA-107 | Bottle of Freixenet Cordon Rosado Champagne Donated by: Kellie Smith | 15.00 |
| SA-108 | 1.0 Liter Bottle of Sobieski Vodka of Poland Donated by: Kellie Smith | 30.00 |
| SA-109 | Bottle of Caravella Orangecello Liqueur Donated by: Kellie Smith | 30.00 |
| SA-110 | Millenium Wine Basket Filled with Wonderful Treats and Treasures! Donated by: John & Dagmar Wicks | 75.00 |
| SA-111 | \$20 Gift Card Donated by: Sinful Treats Desserts | 20.00 |
| SA-112 | Rose's Pomegranate Cocktail Infusion with Mixing Shaker and Serving Glass Donated by: Kellie Smith | 40.00 |

Silent Auction—Pink T-bird Table

Closes at 7:00 p.m.

| | | |
|---------------|---|--------|
| SA-113 | Picnic Time! Meritage Wine & Cheese Tote filled with Wine, Glasses and more! Donated by: Kellie Smith | 75.00 |
| SA-114 | 2 Bottles of Bogle 2006 Petit Sirah Port Donated by: John & Virginia Hadley | 40.00 |
| SA-115 | Coleman's Sterling Vintner's Collection Ice Chest Donated by: Kellie Smith | 190.00 |
| SA-116 | 3 Bottle Cabernet Sauvignon Venicle Set in Gift Case Donated by: Bogle Winery | 60.00 |
| SA-117 | St Patrick's Day Celebration Basket Donated by: Redeemer Lutheran Church, Lodi | 50.00 |
| SA-118 | "Bartender's Set" Jameson Irish Whiskey T-Shirt, Stirrers and 6 Glass Tumblers Donated by: Kellie Smith | 60.00 |
| SA-119 | Yorkville and Holly Hill Wines - 2 Bottles Donated by: Laurie Salter | 60.00 |
| SA-120 | Golden Ornamental Birdcage filled with 4 Bottles of Story Winery White Zinfandel Donated by: Mary Arakelian & Colleen Mahoney | 50.00 |
| SA-121 | 1.5 Liter Bottle of Bogle 2005 Old Vine Zinfandel in Wooden Gift Box Donated by: Austin & Cindy Eaton | 45.00 |
| SA-122 | Parton Citronage Extra Fine Orange Liqueur Donated by: Kellie Smith | 25.00 |
| SA-123 | Patron XO Café Coffee Liqueur Donated by: Kellie Smith | 30.00 |

Silent Auction—Pink T-bird Table

Closes at 7:00 p.m.

| | | |
|---------------|--|-------|
| SA-124 | Member's Mark Mint Julep 1.0 Liter Bottle Donated by: Kellie Smith | 30.00 |
| SA-126 | Gran Centeranio Tequila Donated by: Kellie Smith | 30.00 |
| SA-127 | 1.0 Liter Bottle of Michael Collins Irish Whiskey Donated by: Kellie Smith | 35.00 |



DELTA

RESTAURANT SUPPLY
AND PARTY EQUIPMENT RENTALS

THE BEST IN FULL SERVICE RENTALS SINCE 1975!

SPECIAL EVENTS & OCCASIONS • CORPORATE FUNCTIONS
NO PARTY TOO BIG OR TOO SMALL
RENT-A-KITCHEN • MOBILE/REMOTE

Dianne Nannini, Owner
Wholesale ~ Retail ~ Leasing
3429 Longview Dr. • Sacramento • Near Corner of Watt & Longview
www.deltarestaurantsupply.com

| | |
|--|--|
| Phones: (916) 485-8111 Showroom (877) 301-5803 Toll Free | Hours: Mon thru Fri: 8am – 5pm Saturday: 9am – 1pm |
|--|--|

Thank you Delta, for tonight's supplies!

Silent Auction—Blue T-bird Table

Closes at 7:20 p.m.

| | | |
|---------------|---|--------|
| SA-201 | Private Lesson for Basketball Donated by: Sacramento Skills Academy | 60.00 |
| SA-202 | Chops Steakhouse \$50 Gift Card Donated by: Kellie Smith | 50.00 |
| SA-203 | Two Lift Ticket Vouchers for the 2010 Season Donated by: Tahoe Donner Association | 72.00 |
| SA-204 | Two Lunch for Two Meal Tickets with Drinks and Two T-Shirts Donated by: Mr. Pickles Sandwich Shop, Laguna Blvd, Elk Grove | 70.00 |
| SA-205 | 11x14 Photograph of the Front End of a 1957 Chevrolet Donated by: Leslie Kate Photography | 50.00 |
| SA-206 | Dinner for Two Certificate Donated by: Old Spaghetti Factory | 40.00 |
| SA-207 | Canon Pixma Mini 260 Photo Printer Donated by: Alan & Diana Fraser | 150.00 |
| SA-208 | In & Out Gift Pack with Meal Vouchers, T-shirts and more! Donated by: In & Out Burger | 42.00 |
| SA-209 | Circus-Themed Children's China Tea Set Donated by: John & Dagmar Wicks | 65.00 |
| SA-210 | German/Bavarian Coffee Set Donated by: John & Dagmar Wicks | 150.00 |
| SA-211 | \$40 Gift Certificate Donated by: Zinfandel Grill and Bar, Gold River | 40.00 |
| SA-212 | Wonderful Selection of the Family Favorites on a Bed of Taffy in a Sweet Recipe Bowl! Donated by: Kobasic's Candies | 60.00 |

Silent Auction—Blue T-bird Table

Closes at 7:20 p.m.

| | | |
|---------------|--|--------|
| SA-213 | Dr. Seuss Quilt, Books and DVD's. This will make a great Easter or Birthday gift for a special child! | |
| | Donated by: Town & Country Quilters and Linda Ames | 95.00 |
| SA-214 | Dinner for Two and more in this Logan's Gift Tin Bucket...Including Peanuts! | |
| | Donated by: Logan's Roadhouse Restaurant | 40.00 |
| SA-215 | Easter Basket Filled with Goodies that make the Season Special! | |
| | Donated by: John & Dagmar Wicks | 60.00 |
| SA-216 | Two Special Knives - one Eagle Knife and Sheath and one Eagle Knife w/Eagle Scabber | |
| | Donated by: Andy Johas | 60.00 |
| SA-217 | Handmade Polar Fleece Kings Blanket | |
| | Donated by: Mary Kay Vigilone | 50.00 |
| SA-218 | Set of 3 Beautiful Bronze Cast Wall Plates with Biblical Scenes | |
| | Donated by: John & Dagmar Wicks | 110.00 |
| SA-219 | \$50 Gift Certificate | |
| | Donated by: Peach Garden Seafood Restaurant | 50.00 |
| SA-220 | \$50 Gift Certificate | |
| | Donated by: Peach Garden Seafood Restaurant | 50.00 |
| SA-221 | One Night Lodging Sun-Friday (excludes holidays) | |
| | Donated by: Lone Oak Lodge, Monterey, CA | 85.00 |
| SA-222 | Five VIP Guest Vouchers - Senate Box Seating for 2010 Season | |
| | Donated by: Sacramento Rivercats | 60.00 |
| SA-223 | \$50.00 Gift Certificate | |
| | Donated by: The Original Mike's Diner | 50.00 |
| SA-224 | Set of 12 Crystal Wine Glasses and 12 Champagne Glasses | |
| | Donated by: John & Dagmar Wicks | 150.00 |

Silent Auction—Blue T-bird Table

Closes at 7:20 p.m.

| | | |
|---------------|--|-------|
| SA-225 | Thomas Kincade Accent Print (with authenticity letter attached) Donated by: Mary Arakelian | 75.00 |
| SA-226 | Omron Blood Pressure Monitor Donated by: Knott's Pharmacy | 60.00 |
| SA-227 | Concordia Publishing House - Treasury of Daily Prayer Book Donated by: Bob Roehrs | 50.00 |
| SA-228 | One Private Riding Lesson at Pacific Equestrian Center Given by Karen Colston Donated by: Karen Colston | 75.00 |
| SA-229 | \$50 Paragary Restaurants Gift Card Donated by: Jim & Cecily Hastings | 50.00 |
| SA-230 | Four Hours of House or General Cleaning Donated by: Panda's Domestic Service Agency | 75.00 |
| SA-231 | Poppy Pack - Admits 4 to the Fair and Includes 4 Rides and Free Parking! Donated by: California State Fair | 70.00 |
| SA-232 | Children's Easter Basket filled with illustrated Bible, Stuffed Animal and More! Donated by: John & Dagmar Wicks | 75.00 |
| SA-233 | The Outdoorsman 20x50 mm Field Telescope Donated by: Bob Roehrs | 80.00 |
| SA-234 | Bright Pink I-Pod Shuffle Donated by: Laurie Salter | 50.00 |
| SA-235 | Route 66 License Plate Art Donated by: Joe & Sandra Elledge | 85.00 |
| SA-236 | EXTRA LARGE Igloo Cooler! Donated by: Del & Lynn Haven | 87.00 |

Silent Auction—Yellow Mustang Table

Closes at 7:30 p.m.

| | | |
|---------------|---|--------|
| SA-301 | Bone China Tea Set Donated by: Boba Tea & Gifts | 90.00 |
| SA-302 | Dinner & Show Downtown - \$50 Paragary's and \$35 Imax Gift Certificate Donated by: Steve & Lynn Savage | 85.00 |
| SA-303 | 21-Piece Cutlery Set Donated by: Andy Johas | 90.00 |
| SA-304 | Jameson Snowboard Donated by: Kellie Smith | 300.00 |
| SA-305 | Lionel Santa Fe Freight Train Set Donated by: Chet & Terrie Van Scyoc - R/C Country Hobbies | 240.00 |
| SA-306 | 14K Chain w/Handmade Semi-precious Gemstone Picture Donated by: AK Jewelers | 315.00 |
| SA-307 | 2—\$50 Gift Cards Donated by: Winco Foods | 100.00 |
| SA-308 | 3 Katana Swords Donated by: Andy Johas | 75.00 |
| SA-309 | 2 Complimentary Tickets for the 2010 Season Donated by: Oregon Shakespeare Festival | 100.00 |
| SA-310 | Skating Party for 20! Read Pass for Details and Restrictions Donated by: Sunrise Rollerland | 180.00 |
| SA-311 | Chocolate Lover's Basket. Absolutely Incredible! Chocolate, Chocolate and More Chocolate! Donated by: Trinity Lutheran Women in God's Service | 200.00 |
| SA-312 | Four Special Guest Passes to a Friday or Saturday Evening Show Donated by: Laughs Unlimited | 80.00 |

Silent Auction—Yellow Mustang Table

Closes at 7:30 p.m.

| | | |
|---------------|--|--------|
| SA-313 | Huffy Men's Bike with Multi Speed/Freewheel Donated by: Jacob & Erin Chapin | 150.00 |
| SA-314 | Driver's Education Course Meets CA Teen Driving Requirements Donated by: Bond Driving School | 199.00 |
| SA-315 | Driver's Education Course Meets CA Teen Driving Requirements Donated by: Bond Driving School | 199.00 |
| SA-316 | Bread for a Year Certificate - Receive 13 Bagels and 2 Cream Cheese Spreads of your Choice for a Year! Donated by: Panera Bread | 156.00 |
| SA-317 | Sacramento Kings Voucher for Four Upper Level Tickets to a Game during the 2010 Season Donated by: Tom Sebo & Cheryl Young | 100.00 |
| SA-318 | One Month Free Gymnastics Lessons Donated by: Byers Gymnastics, Elk Grove | 105.00 |
| SA-319 | Two Tickets to the May 2 performance of Carmina Burana and a CD of the Choral Tour Donated by: Sacramento Choral Society & Orchestra | 100.00 |
| SA-320 | Hors d'oeuvres Party for 10 Donated by: Enotria Restaurant & Wine Bar | 125.00 |
| SA-321 | Two Hours of Piano Music at your Location (you provide the piano) Donated by: Matthew Jones | 150.00 |
| SA-322 | One Day Park Admission for Two Donated by: Great America, Santa Clara | 108.00 |
| SA-323 | Two Single Day Admission Badges for May 2010 Jazz Festival Donated by: Sacramento Jazz Society | 90.00 |

Silent Auction—Yellow Mustang Table

Closes at 7:30 p.m.

| | | |
|---------------|--|--------|
| SA-324 | Cupcake Basket Filled with all Things 'Cupcake.' Gorgeous, Yummy and Sweet! | |
| | Donated by: Kathy & Terry Emery | 90.00 |
| SA-325 | Two Ski Lift Tickets for the 2010 Season | |
| | Donated by: Sugar Bowl | 132.00 |
| SA-326 | Disneyland/California Adventures One Day Park Hopper Passes for a Family of Four! | |
| | Donated by: Disneyland Resort, Anaheim | 400.00 |
| SA-327 | "U R Strong" Original Framed Photo Art Pieces | |
| | Donated by: Dan Yamamoto, Yamamoto Designs | 200.00 |
| SA-328 | Monotype Framed Abstract Painting | |
| | Donated by: Embarcadero Capital Partners LLC | 200.00 |
| SA-329 | Palmate Panter Triptec Framed Art | |
| | Donated by: Embarcadero Capital Partners LLC | 300.00 |
| SA-330 | Dimensional Paper Print Floated on Mat and Framed | |
| | Donated by: Embarcadero Capital Partners LLC | 250.00 |
| SA-331 | "JoAnna" Numbered and Signed Art Piece | |
| | Donated by: Embarcadero Capital Partners LLC | 250.00 |
| SA-332 | 54x34 Abstract Painting | |
| | Donated by: Embarcadero Capital Partners LLC | 250.00 |
| SA-333 | 36x27 Photograph of a San Francisco Historic Streetcar | |
| | Donated by: Leslie Kate Photography | 200.00 |

Thank you Donors & Sponsors!

Lutheran High School extends its gratitude to the following businesses and individuals for their support! We would ask that you look over the list of donors and remember to support them as they have supported Lutheran High School.

| | | |
|--------------------------------|---|---|
| 4th Street Grille | Jim and Ann Cunningham | Perfectly Clear Inc. |
| AK Jewelers | Joe & Sandra Elledge | Phyllis Potts |
| Alan & Diana Fraser | John & Dagmar Wicks | R/C Country Hobbies |
| All About You Salon, Elk Grove | John & Virginia Hadley | Redeemer Lutheran Church |
| American River Raft Rental | Judy Lloyd | Rev Jay & Shannon Reed |
| AMF Land Park Lanes | June Balian | Reverend Walter & Ione Tietjen |
| Andy Johas | Kathleen Hecox | Richard & Helen Rogers |
| Austin & Cindy Eaton | Keeta Scholl | Rob & Ingrid Shepline |
| Bradshaw Ranch Golf Course | L. Ruth Cronin | Ron & Judith Clark |
| Bill and Joy Plath | Leatherby's | Ron & Melanie Kuhnel |
| Blattlers by Hoffmann | LHS Parents | Sacramento Choral Society & Orchestra |
| Bob Roehrs | Lisa Dube | Sacramento Jazz Society |
| Boba Tea & Gifts | Loretta & Bill Read | Sacramento Rivercats |
| Bogle Winery | Kara & Mauricio Perez | Sacramento Skills Academy |
| Bond Driving School | Karen Colston | Sacramento Zoo |
| Brian & Jan Wiese | Kathy & Terry Emery | Sinful Treats Desserts |
| Byers Gymnastics, Elk Grove | Kellie Smith | Soaring Adventures |
| California Highway Patrol | Knott's Pharmacy | Steve & Lynn Savage |
| California Railroad Museum | Kobasic's Candies | Sugar Bowl |
| California State Fair | Laughs Unlimited | Sunrise Rollerland |
| Chet & Terrie Van Scyoc | Laurie Salter | Tahoe Donner Association |
| Chuck & Linda Weber | Leslie Kate Photography | The Cosmopolitan Cabaret |
| City Bicycle Works | Light of the Valley Women's Group | The Melting Pot |
| Colleen Mahoney | Linda & Steve Ames | The Original Mike's Diner |
| Contours Express, Elk Grove | Logan's Roadhouse Restaurant | Thrivent El Dorado Hills Chapter |
| Craig & Amy Heiser | Lone Oak Lodge, Monterey, CA | Thrivent North Sacramento Chapter |
| Custom Fireside Shop | Madge Mulkey | Thrivent South Sacramento Chapter |
| Dave Kretzmann | Mary Arakelian | Tom Sebo & Cheryl Young |
| Del & Lynn Haven | Mary Kay Vigilone | Town & Country Lutheran Quilters |
| Delta Restaurant Supply | Matthew Jones | Town & Country LWML Quilters |
| Disneyland Resort, Anaheim | Mels Diner, Folsom | Trinity Lutheran Women in God's Service |
| Enotria Restaurant & Wine Bar | Milton Balian | Vic's Ice Cream |
| Fairytale Town | Miss Mellow | Wendall Alf |
| Gary Dinnen | Mr. Pickles Sandwich Shop, Laguna Blvd, Elk Grove | Will & Jane Nelson |
| Gloria Browner | Myrna & John Corzine | Winco Foods |
| Great America, Santa Clara | Old Spaghetti Factory | Zinfandel Grill and Bar, Gold River |
| Harvey and Marsha Cain | Oregon Shakespeare Festival | |
| In & Out Burger | Panda Domestic Service | |
| Irene Powers | Panera Bread | |
| Jacob & Erin Chapin | Peach Garden Seafood Restaurant | |
| Jim & Cecily Hastings | | |

2010 Auction Committee

| | |
|---|--|
| Auction Coordinator | Linda Ames |
| Auctioneer | Gary Wendall |
| Gift Gathering | Virginia Hadley, Kellie Smith, Catherine Yee, Irene Powers, Bob Roehrs, Linda Ames, Friends of LHS, Parents and Countless Others! |
| Graphic Artist & Invitations..... | Keeta Scholl, Leslie Emery dba Leslie Kate Photography |
| Bartending | Matt Kretzmann and LHS Alumni |
| Cashiering | Debbie Burow, Patty Smith, Irene Powers |
| Cataloguing..... | Linda Ames, Virginia Hadley, Judy Lloyd |
| Corporate Sponsorships | Virginia Hadley, Linda Ames |
| Portage | Linda Ames, Lisa Harris, Dagmar & John Wicks, Virginia & John Hadley |
| Caterer & Linens..... | Linda Ames, Kara & Mauricio Perez |
| Restaurant Supply | Kara & Mauricio Perez |
| Senior Basket Coordinator | Michelle Dragics |
| Junior Basket Coordinator | Patricia Stevens and Tom Bost |
| Sophomore Basket Coordinator..... | Kimberli Brewer |
| Freshmen Basket Coordinator | Terri Lowe |
| Clean Up..... | Auction Committee, LHS Students, Parent Volunteers |
| Coffee | Kara & Mauricio Perez, Coffee Break Café |
| Decorations..... | Linda Ames |
| Food & Beverages for Volunteers | Judy Lloyd |
| Silent Auction..... | John & Dagmar Wicks, Debbie Burow, Patty Smith, Stephanie & Joel Midthun, Bernice Prasad |
| Live Auction | Lisa Harris, Linda Ames |
| Live Auction Recorders..... | Shannon Galloway |
| Master of Ceremoies..... | Kelly Kaminskaskas |
| Program | Keeta Scholl |
| Publicity | Keeta Scholl, Virginia Hadley |
| Round Tables | Greenhaven Lutheran Church |
| Set Up..... | Stephanie & Joel Midthun, Patricia Stevens, Bernice Prasad, John & Virginia Hadley, Lisa Harris, Judy Lloyd, Catherine Yee, Kara Perez, John & Dagmar Wicks, Shelly Worden |
| Student Supervisors..... | Linda Pugh, Doug & Rachelle Harris |
| Table Marshalls | Dagmar & John Wicks, Stephanie & Joel Midthun, Bernice Prasad |
| Table Wine..... | Kellie Smith |
| Ticket Sales | Irene Powers, LHS Students & Families, Lutheran Churches |
| Welcome Committee..... | Jennifer Arango, Bernice Prasad, Debbie Burow, Joni Claerbout, LHS Students |
| Sound | Mike Scholl |
| LHS Music | Mike Scholl, LHS Choir, LHS Praise Band |
| Dinner Serving..... | Lutheran High Students |
| Raffle Ticket & License Plate Sales | Catherine Yee, LHS Students |

We regret if any names have been inadvertently omitted from this list. We want to thank ALL who contributed in the many ways to bring glory to God and support to LHS!